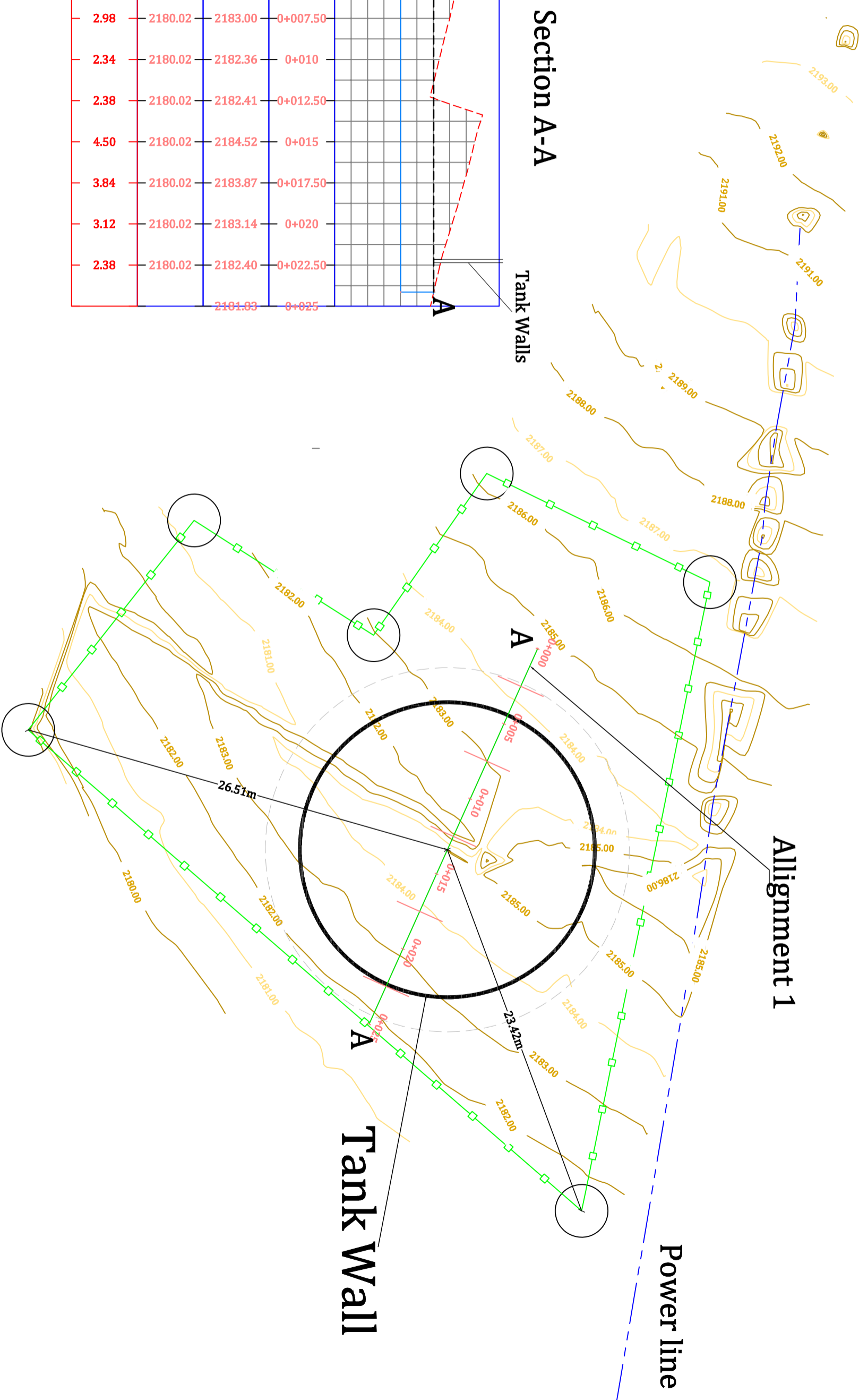


TOPOGRAPHICAL SURVEY MAP

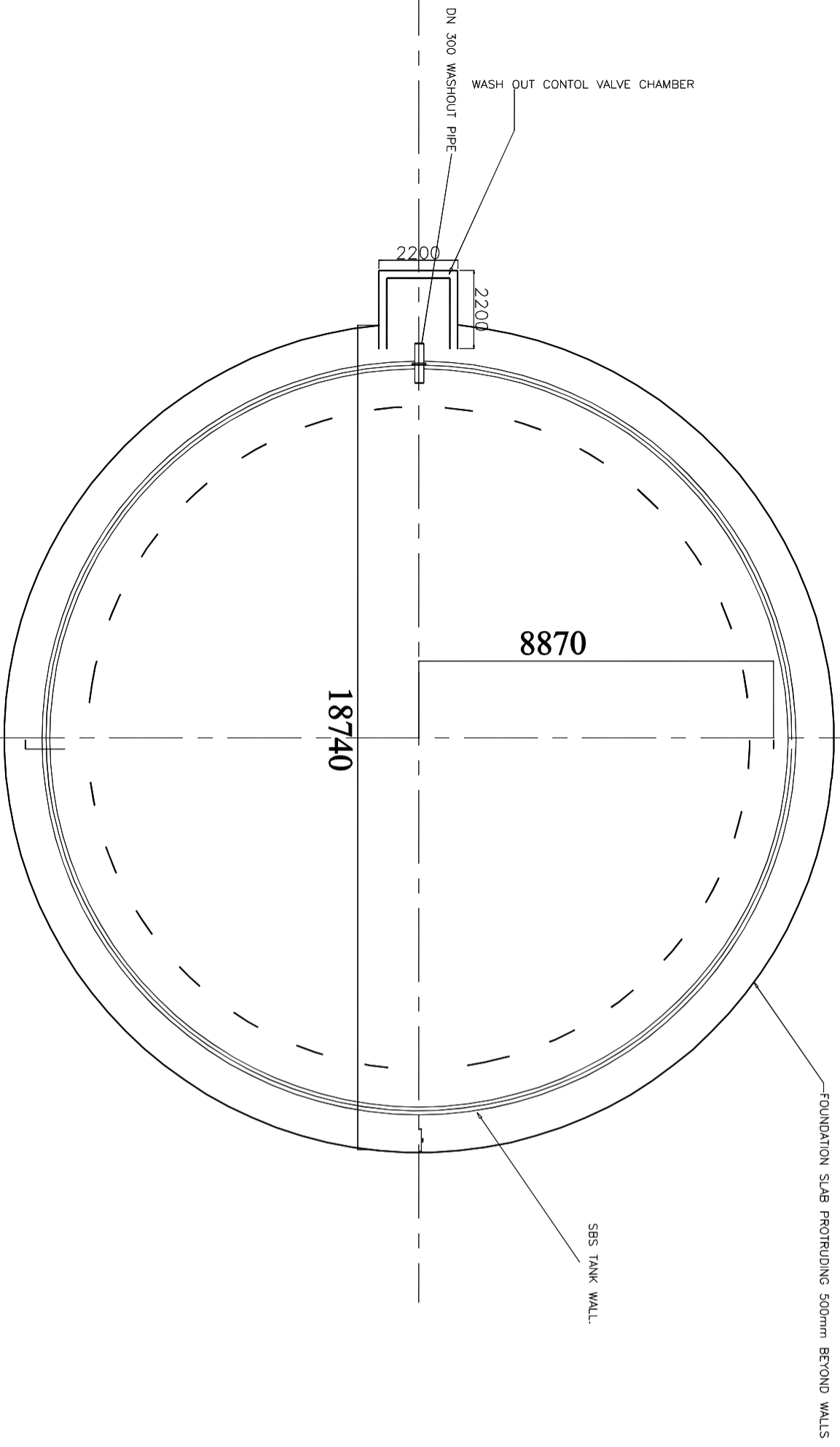


Section A-A

Chainage	OGI	OGI	Chainage
2186.00	2184.75	2184.27	0+000
2184.00	2180.02	2184.27	0+002.50
2182.00	2180.02	2183.60	0+005
2180.00	2180.02	2183.00	0+007.50
2178.00	2180.02	2182.36	0+010
2176.00	2180.02	2182.41	0+012.50
	2180.02	2184.52	0+015
	2180.02	2183.87	0+017.50
	2180.02	2183.14	0+020
	2180.02	2182.40	0+022.50
	2181.83	2182.40	0+025

INVERT

Cut



1. Concrete mix:— Unless otherwise specified the concrete shall be a **1:1.5:3** mix and shall give min. work cube strength or 18N/mm² at 7 days and 25N/mm² at 28 days.
2. Aggregates in coarse and fine to be clean and devoid of foreign matter comply with BS 882. with maximum aggregate size of 20mm
3. Steel must be high tensile deformed type 2 with characteristic strength of not less than 425N/mm²
4. Steel placing:— No concreting shall be done until the placing of steel reinforcement has been inspected and approved by a site Engineer.
5. Concrete cover:— Unless otherwise specified min. cover over main bars to be 50mm for foundation, 25mm for slabs, 30mm for beam and 40mm for column.
6. Construction breaks and shuttering stripping time to be directed and approved by site Engineer.
7. Curing:— The exposed surface of the concrete shall be kept moist for a min. period of 7 days after placing.
8. Any disagreement should be immediately specified to this office before placing.
9. Water proofing (Internally):— Provide 20mm thick rendering added sealcrete waterproofing compound as per sealcrete hand book. or approved equivalent
10. The foundations have been designed for soil with bearing capacity of 100kn/m², actual bearing soil capacity to be confirmed on site.

FOUNDATION LAYOUT

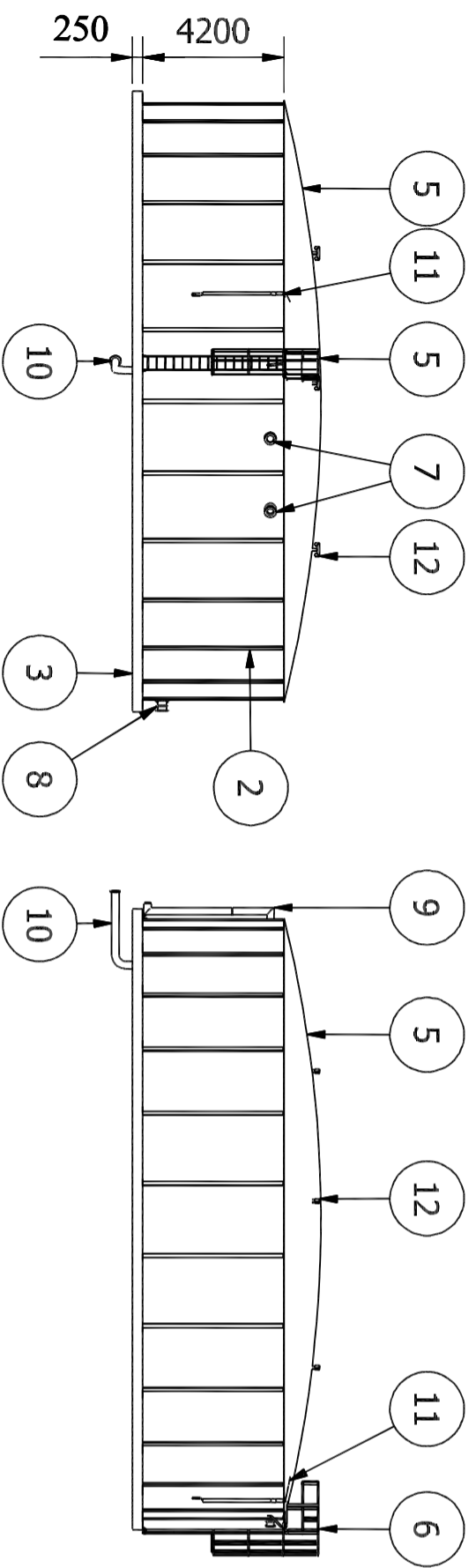
3			
4			
3			
2			
1			
Rank	By	Date	

Approved for Construction			
Name	Sign	Date	Designation
Designer			
Date	10/01/2022		
Approved:			
Date	10/01/2022		
Approved			
Revisions			



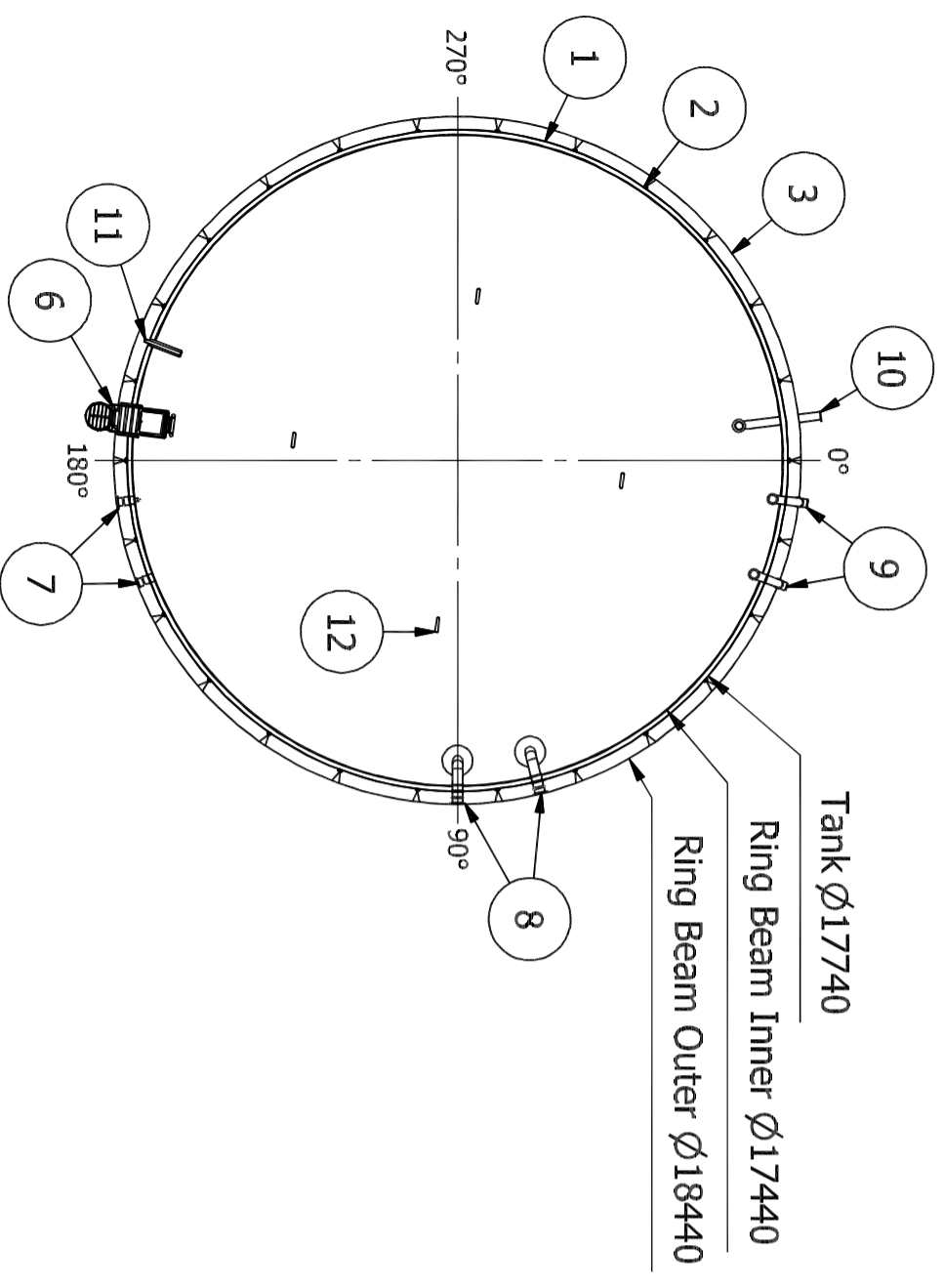
Foundation layout

Drawn No	Rank
F-03	01
Description	Sheet



FRONT ELEVATION

LEFT SIDE ELEVATION




PLAN VIEW

ITEM	QTY	PART NUMBER	DESCRIPTION
1	1	Tank Wall	Zincalume Steel Panels, Steel Grade G300, with AZ150 Heavy Duty Coating.
2	26	Wind Girts/Uprights & Covers	Wind Girts are made from 2.4 mm hot dipped galvanised sheet metal. Punched and bent into profile
3	1	Concrete Ring Beam	Reinforced, 25 Mpa min.
4	1	Truss Set (Not Shown)	Made from SHS (300 Mpa min) and EA steel. Hot dipped galvanised after fabrication. Roof rated to withstand a 67m/s wind load.
5	1	Dome Roof	Zincalume corrugated sheets, 0.47 mm thick, Grade G550, with AZ150 coating.
6	1	Tank Access - 600 mm	Fixed, c/w internal & external ladders, safety cage, platform, access hatch & hand rails.
7	2	Inlet -160NB	Internal deflector, External flange.
8	2	Outlet -160NB	Internal anti-vortex (standard), external flange c/w pipe closure.
9	2	Overflow - 200NB	Internal bell mouth, external downpipe with flange termination c/w 2 x pipe clamps.
10	1	Scour/Floor Mount - 300NB	Internal flange, External flange c/w pipe closure.
11	1	Water Level Indicator	Mechanical (half height reading)
12	4	Ventilator	Static, 76 x 76 SHS.

- Note:
- Nozzle & accessory positions are for representation only, please indicate final positions if required.
 - All external flanges are SANS 1123: 1000/3.
 - All dimensions in mm unless otherwise specified.
 - Standard potable water liner.
 - Drawing not to scale.
 - Projects to select the appropriate pipe closure for each designated nozzle.
 - **Item 7 to be mounted on a 2.0 mm thick panel (2 x 1.0 mm laminated panels).**

5				Drawn:	
4				Date:	10/01/2022
3				Approved:	
2				Date:	10/01/2022
1				Approved:	
Rev.	By	Date		Revisions	

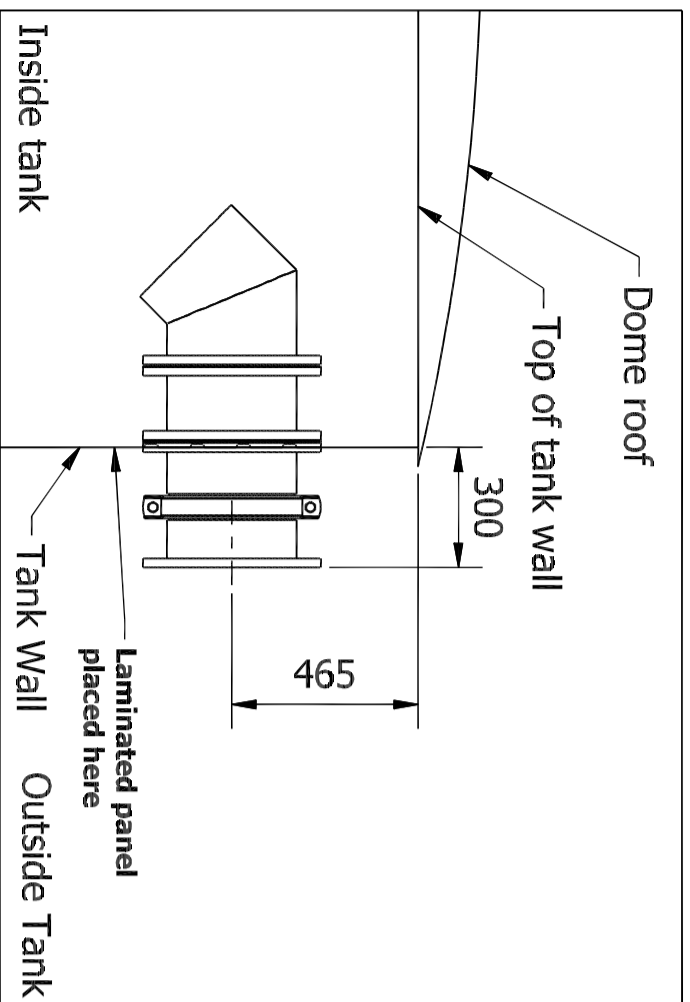
TANK & ACCESSORIES GA - ST26-04



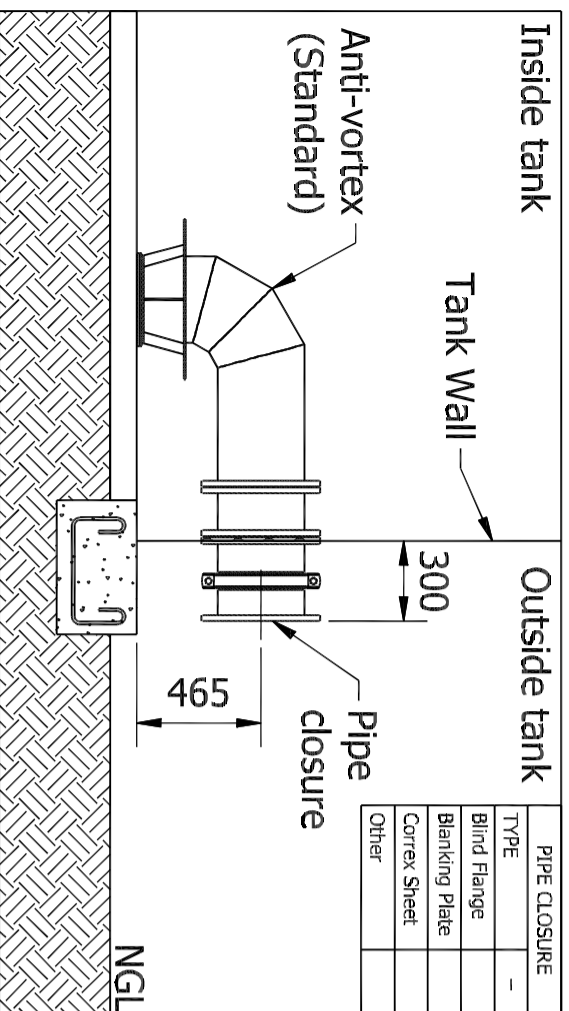
Title: TANK & ACCESSORIES GA - ST26-04

Rev: 00

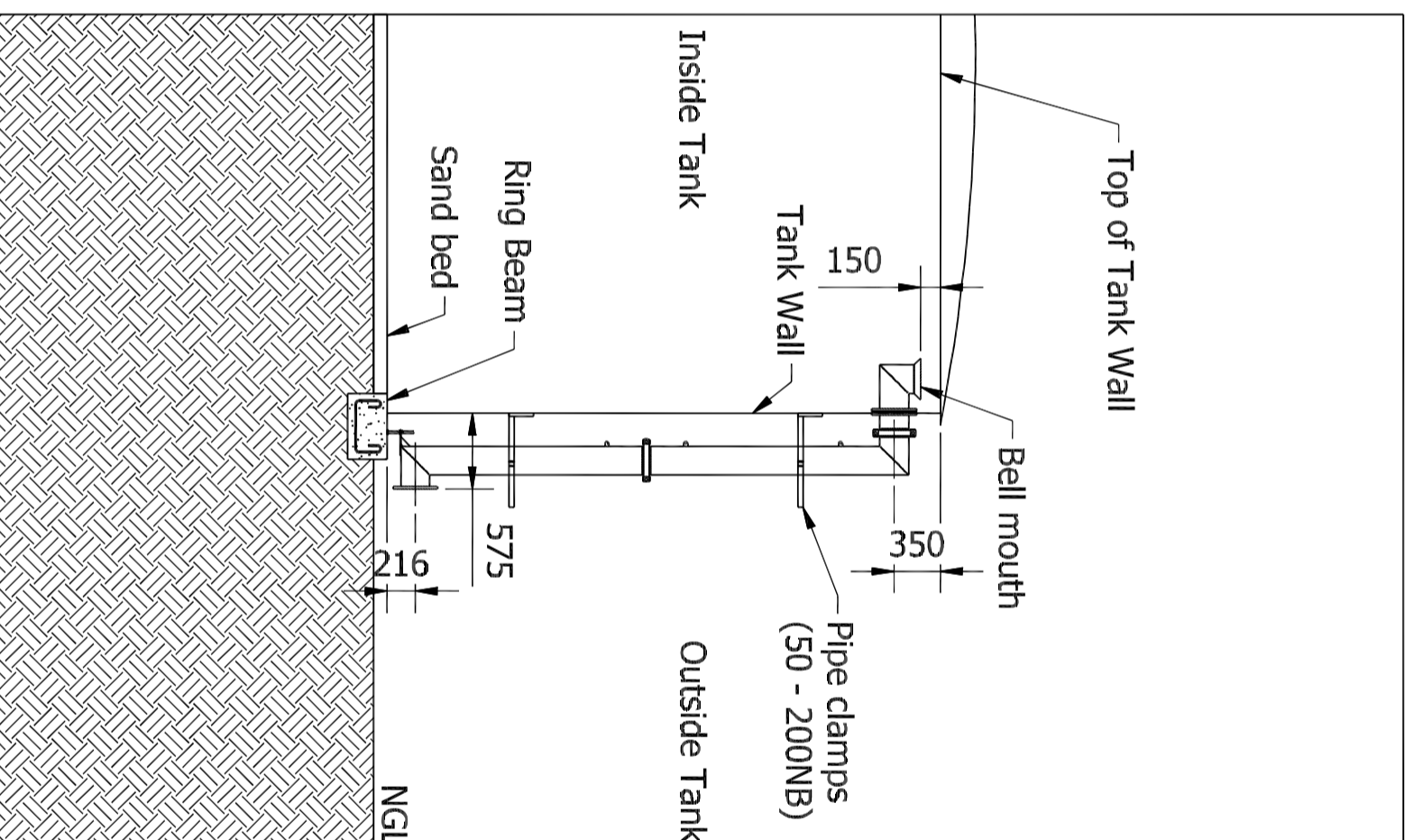
Sheet: 1 / 2



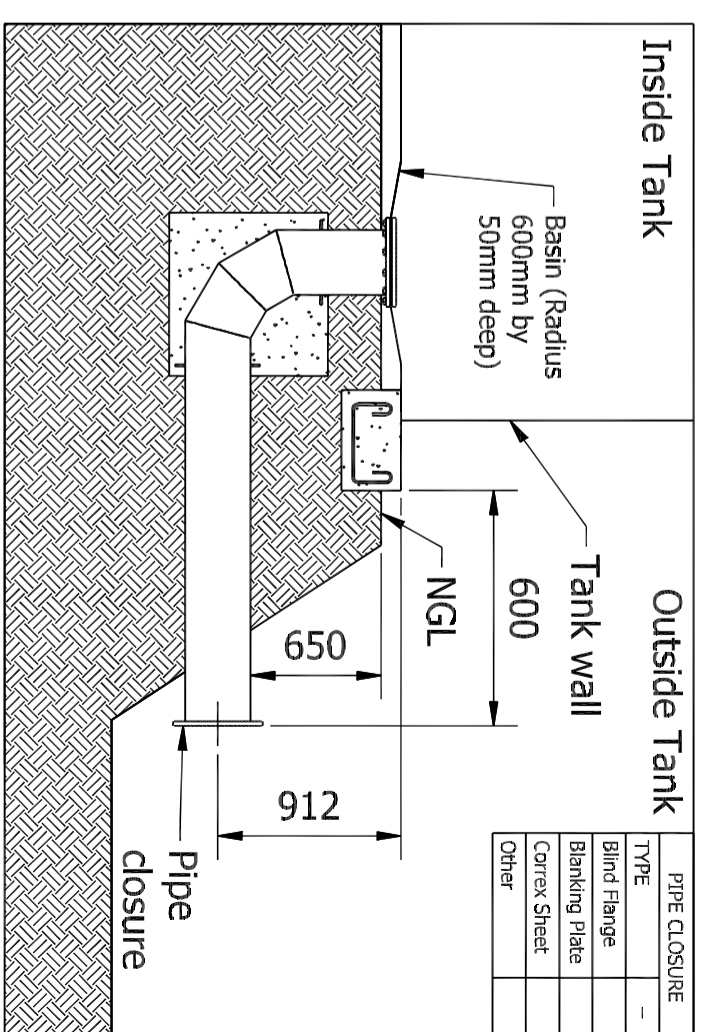
ITEM 7 (INLET -160NB)



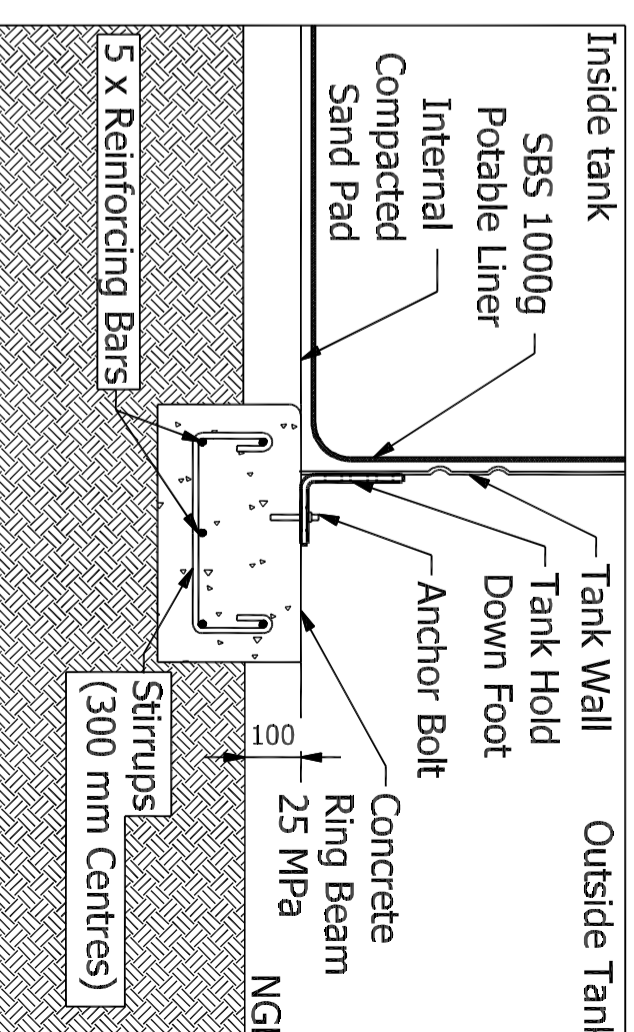
ITEM 8 (OUTLET -160NB)




ITEM 9 (OVERFLOW - 200NB)



ITEM 10 (SCOUR, FLOOR MOUNT - 300NB)

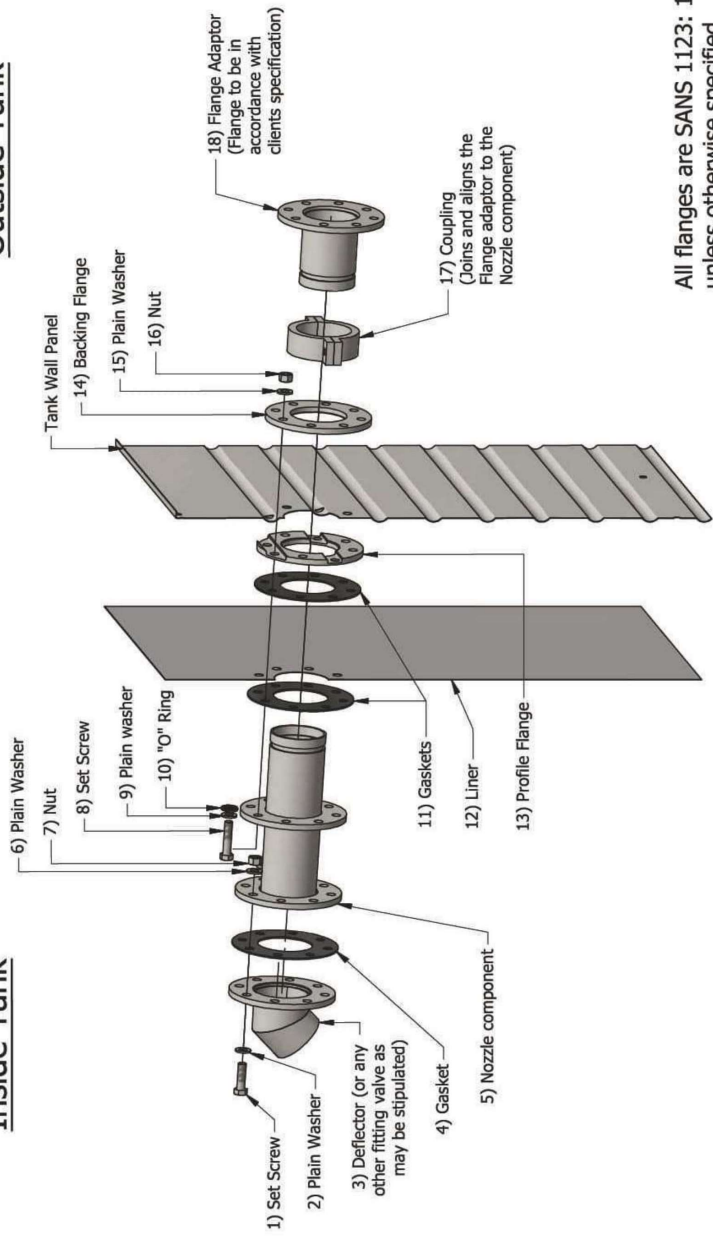


TANK FASTENING & RING BEAM DETAIL

5			Drawn:	
4			Date:	10/01/2022
3			Approved:	
2			Date:	10/01/2022
1			Approved:	
Rev.	By	Date	Approved	10/01/2022
				
Title: TANK & ACCESSORIES GA - ST26-04				
			Rev:	00
			Sheet:	2 / 2

Inside Tank

Outside Tank



All flanges are SANS 1123: 1000\3 unless otherwise specified

